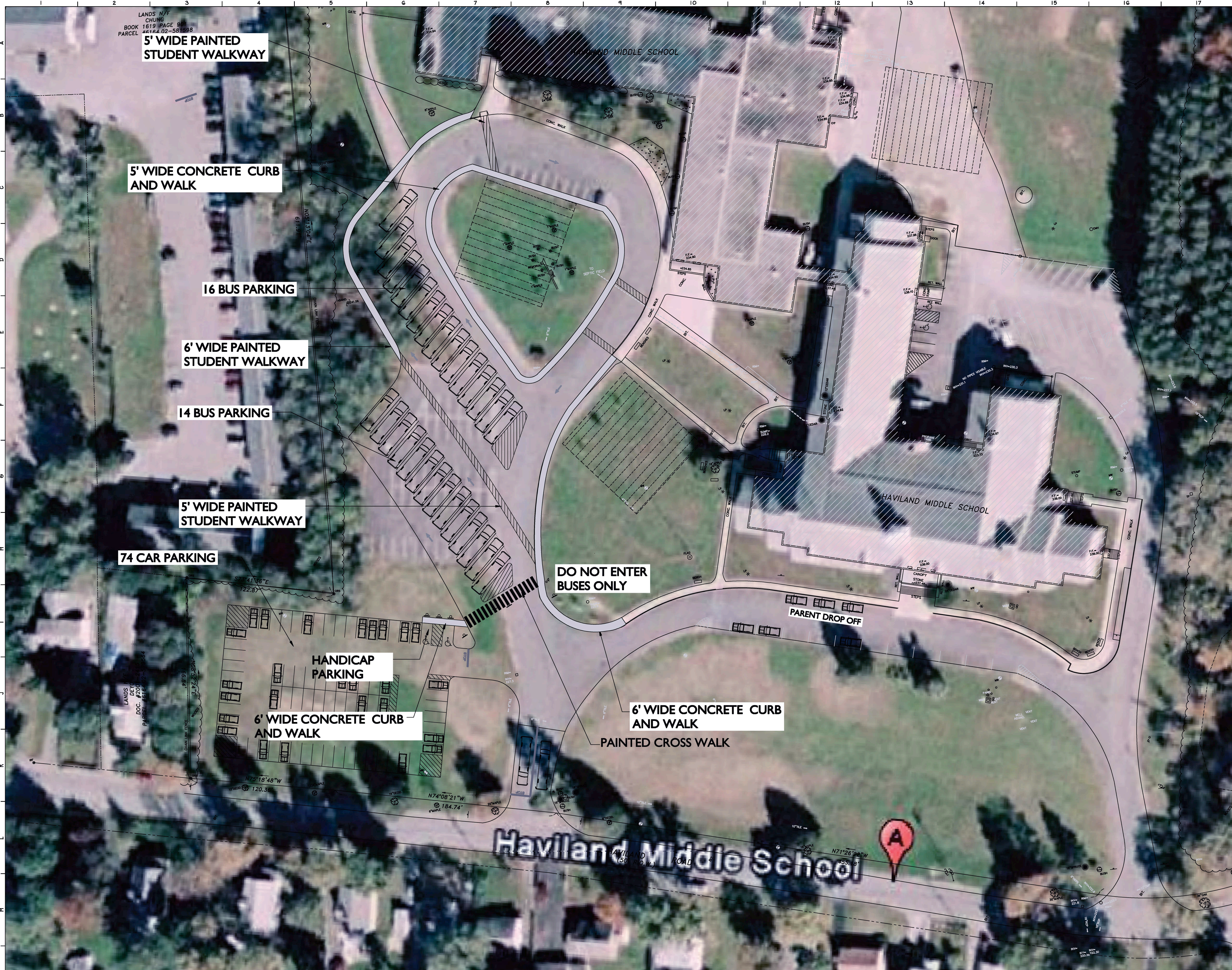


NEW DESIGN SK17

SK17: This design allows for side-by-side, angled parking for all busses, although it calls for a double-row of such parking. Marked crosswalks are available. It is within the budget.



S.E.D. Control No. 13-08-01-06-0-001-018

Rev. No.	Date	Description

**Hyde Park Central
School District**

complex world
CLEAR SOLUTIONS

Tetra Tech Engineers, Architects
& Landscape Architects, P.C.

TETRA TECH
ARCHITECTS & ENGINEERS

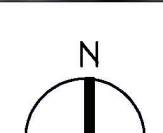
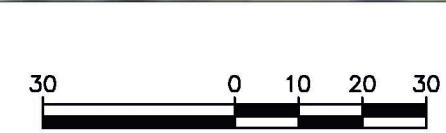
Hyde Park Central School District

**Renovations to:
Haviland Middle School**

**Bus Loop Plan - Option 17
30 BUS PLAN**

Drawn by: JMS	Date: 08.16.10	Drawing No.:
Tetra Project No.:		SK-17
08060-09001		

Hyde Park-Haviland Middle School
1"=30'-0"



Rendering 17

Pros

- **No aesthetic change, maintains the current front curve and lawn in its entirety.**
- **No affects on septic fields or 911 memorial**
- Multiple outside door access reduces student congestion upon entering / exiting building
- Assigned permanent bus spaces, accommodates late arrivals
- **In Prop III budget**

Cons

- **Double lineup (partial)**
- Busses located away from building
- Handicapped parking in loop / limited access during arrival and dismissal
- Parent exit shared with bus traffic